

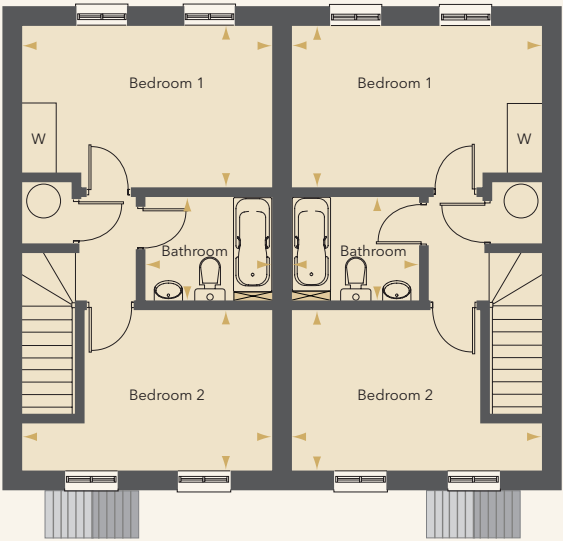
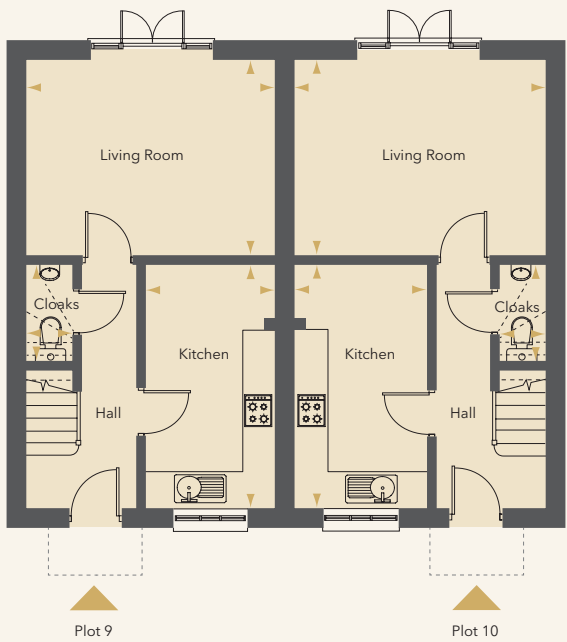
9 & 10 PLOTS

Two **CHARMING**
two bedroom cottages
built in **MELLOW BRICK**
with large rear gardens
overlooking beautiful
countryside, and with good
sized block paved drives.



Computer Generated Image

PLOTS 9 & 10 FLOOR PLANS



GROUND FLOOR

Living Room	4.46m x 3.51m	(14' 7" x 11' 6")
Kitchen/Dining	4.31m x 2.37m	(14' 2" x 7' 9")
Cloakroom	1.74m x 0.86m	(5' 8" x 2' 10")

FIRST FLOOR

Bedroom 1	4.46m x 2.92m max	(14' 7" x 9' 7" max)
Bedroom 2	4.46m x 2.86m max	(14' 7" x 9' 6" max)
Bathroom	2.29m x 1.90m	(7' 6" x 6' 3")