

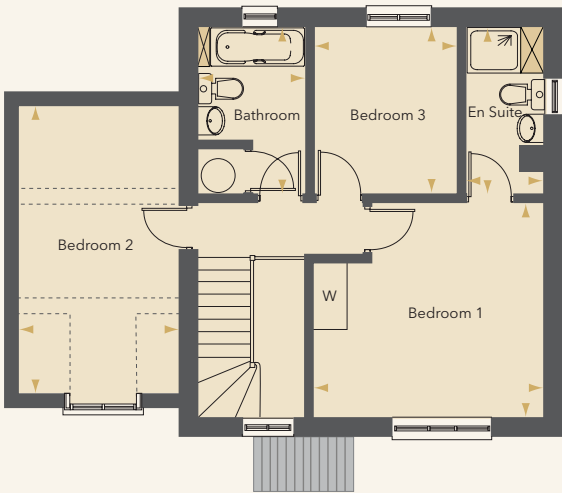
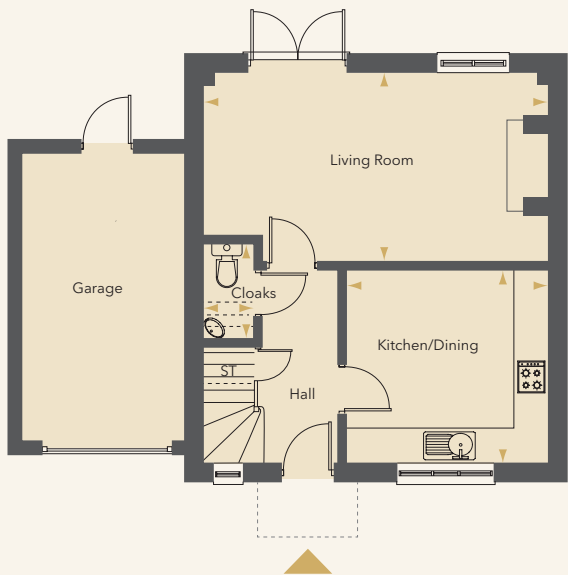
PLOT8

PICTURESQUE  
3 bedroom detached home  
built in a mellow brick with  
GENEROUS living spaces,  
and with FABULOUS  
views over the open  
countryside to the rear.



Computer Generated Image

PLOT 8 FLOOR PLANS



GROUND FLOOR

Living Room	6.14m x 3.34m max	(20' 2" x 10' 11" max)
Kitchen/Dining	3.62m x 3.42m	(11' 10" x 11' 3")
Cloakroom	1.72m x 0.83m	(5' 8" x 2' 9")
Single Garage		

FIRST FLOOR

Bedroom 1	4.12m x 3.83m max	(13' 6" x 12' 7" max)
Ensuite	2.97m x 1.44m max	(9' 9" x 4' 9" max)
Bedroom 2*	4.99m x 2.80m	(16' 4" x 9' 2")
Bedroom 3	2.97m x 2.59m	(9' 9" x 8' 6")
Bathroom	2.97m x 1.88m max	(9' 9" x 6' 2" max)

\* Part reduced eaves