

PLOT 1

An **IMPRESSIVE** four bedroom detached home finished in a warm render with a **SPACIOUS** open plan kitchen, dining and family area, double garage, extensive drive and **DELIGHTFUL** south west facing walled rear garden



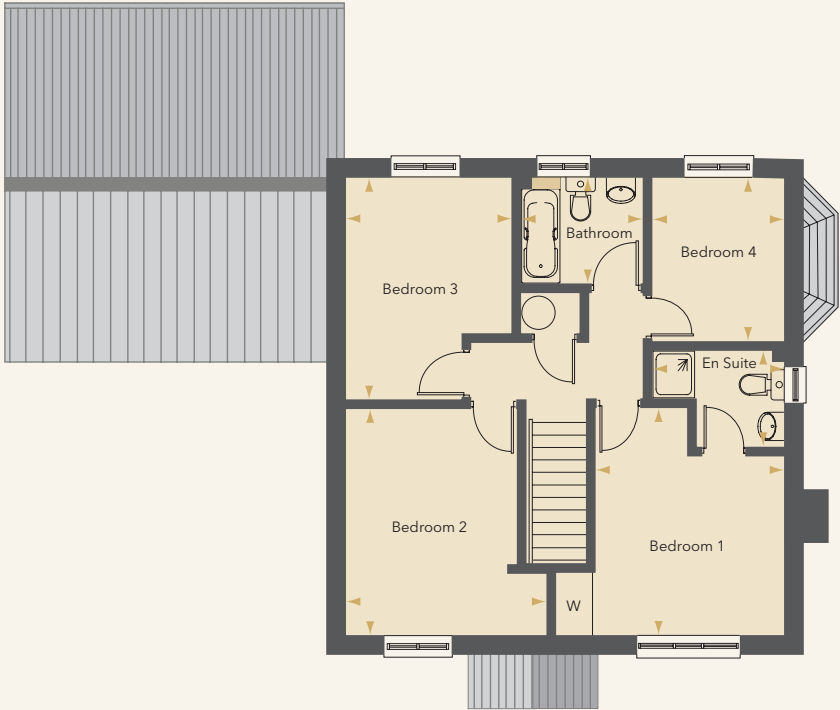
Computer Generated Image

PLOT 1 FLOOR PLANS



GROUND FLOOR

Living Room	5.08m x 3.36m	(16' 8" x 11' 0")
Kitchen	3.98m x 3.26m max	(13' 1" x 10' 8" max)
Family/Dining	4.93m x 2.91m max	(16' 2" x 9' 7" max)
Study	2.27m x 2.1m	(7' 5" x 6' 10")
Utility	2.10m x 1.62m	(6' 10" x 5' 4")
Cloakroom	1.83m x 0.90m	(6' 0" x 3' 0")
Double Garage		



FIRST FLOOR

Bedroom 1	3.41m x 4.06m max	(11' 2" x 13' 4" max)
Ensuite	2.35m x 1.76m max	(7' 8" x 5' 9" max)
Bedroom 2	4.06m x 3.59m max	(13' 4" x 11' 9" max)
Bedroom 3	3.97m x 2.98m max	(13' 0" x 9' 9" max)
Bedroom4	2.94m x 2.35m	(9' 8" x 7' 9")
Bathroom	2.22m x 1.90m	(7' 3" x 6' 3")