

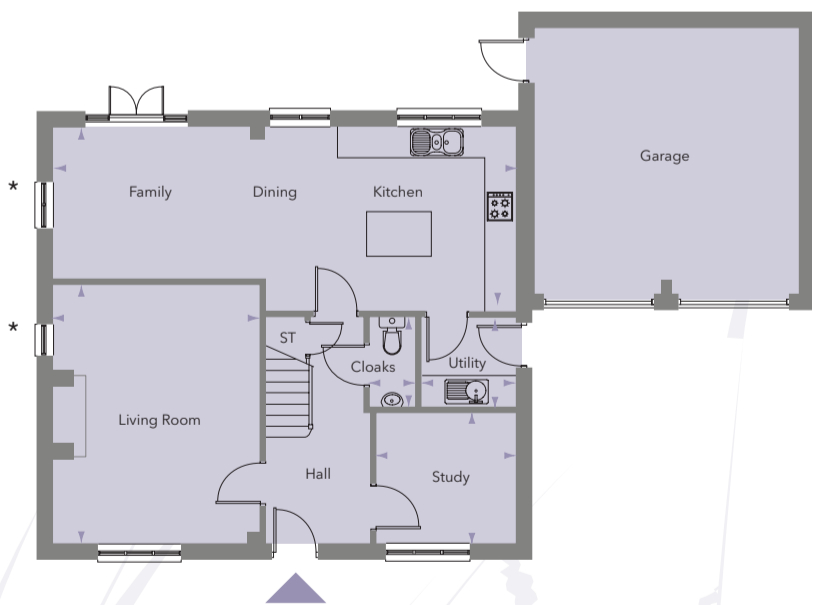
PLOTS 5 AND 6

**Prestigious** four bedroom family homes with **fabulous**, open plan dining/family/kitchen areas featuring island units, with **substantial** rear gardens and great views over open countryside. Plot 5 is built in a mellow brick while Plot 6 has a render finish.

\*CGI depicts plot 6 with render finish. Plot 5 is built in mellow brick. Brick plinth is to plot 6 only



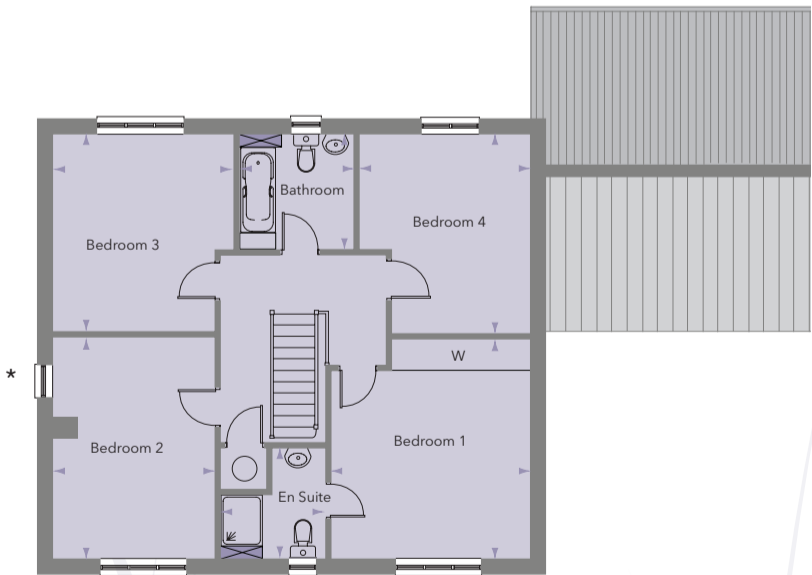
PLOTS 5 AND 6



GROUND FLOOR

Living Room	5.12m x 4.17m	(16' 9" x 13' 8")
Kitchen/Family/Dining	9.35m x 3.64m max	(30' 8" x 11' 11 max)
Study	2.80m x 2.60m	(9' 2" x 8' 6")
Utility	1.89m x 1.77m	(6' 2" x 5' 9")
Cloakroom	1.77m x 0.92m	(5' 9" x 3' 0")
Double Garage		

\* Windows to side to Plot 6 only



FIRST FLOOR

Bedroom 1	4.30m x 3.89m max	(14' 1" x 12' 9" max)
Ensuite	2.15m x 2.05m max	(7' 0" x 6' 9" max)
Bedroom 2	4.35m x 3.15m	(14' 3" x 10' 4")
Bedroom 3	3.82m x 3.53m max	(12' 6" x 11' 7" max)
Bedroom 4	3.87m x 3.33m max	(12' 8" x 10' 11" max)
Bathroom	2.23m x 2.21m	(7' 4" x 7' 3")