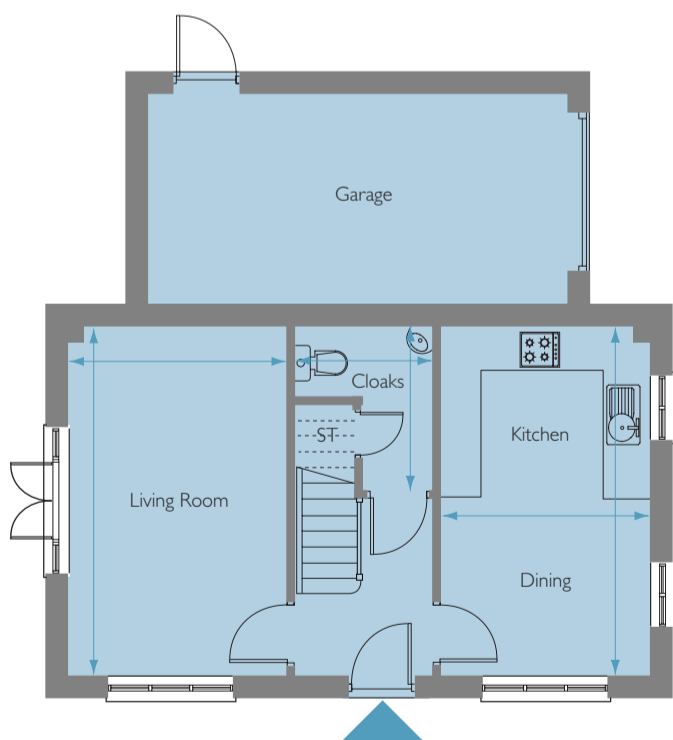




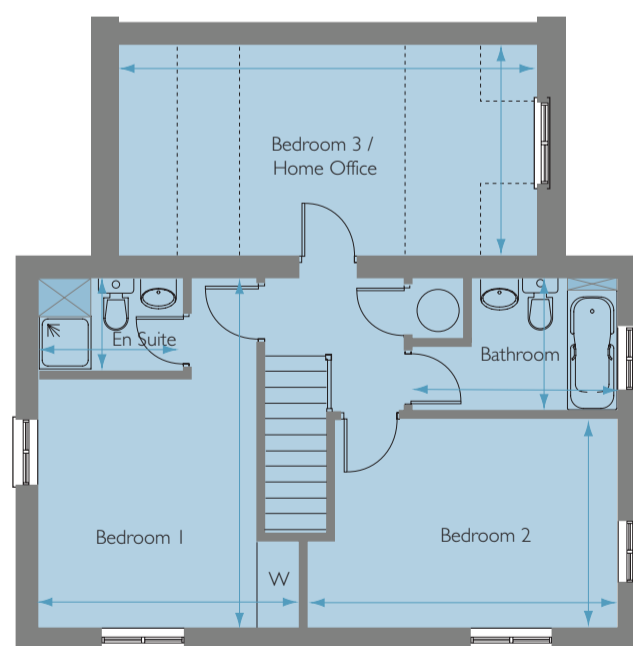
PLOT FOURTEEN



GROUND FLOOR

Living Room
4.94m x 3.10m (16'2" x 10'2")
Kitchen / Dining
4.94m x 2.93m (16'2" x 9'7")

Cloakroom
2.34m x 1.96m max (7'8" x 6'5" max)
Single garage



FIRST FLOOR

Bedroom 1
4.94m x 3.70m max (16'2" x 12'2" max)
Ensuite shower room
2.02m x 1.31m max (6'8" x 4'4" max)
Bedroom 2
4.40m x 2.93m max (14'5" x 9'7" max)

Bedroom 3 / Home office*
5.95m x 2.97m (19'6" x 9'9")
Bathroom
2.93m x 1.89m max (9'7" x 6'2" max)

* part reduced eaves