

Harburyfields

plots 38, 40, 46 and 47

Four impressive four bedroom detached homes with plot 46 (shown) being constructed in Cotswold natural stone and plots 38, 40 and 47 in Warwickshire Old English red brick. Plots 38 and 40 are also 'handed' from the illustration and plans shown.

These family homes benefit from a living room (with brick inglenook style fireplace and multi-fuel burning stove), dining room, separate study, a fully fitted kitchen with utility room, cloakroom and a double garage. Upstairs the master bedroom has an ensuite and fitted wardrobe. A family bathroom and three further generous bedrooms complete the design.

Computer generated image shows Plot 46. Plots 38, 40 and 47 are constructed from face brick

plots 38, 40, 46 and 47 first floor

Bedroom 1
4.18m max x 3.39m (13'9" max x 11'2")
plus wardrobe

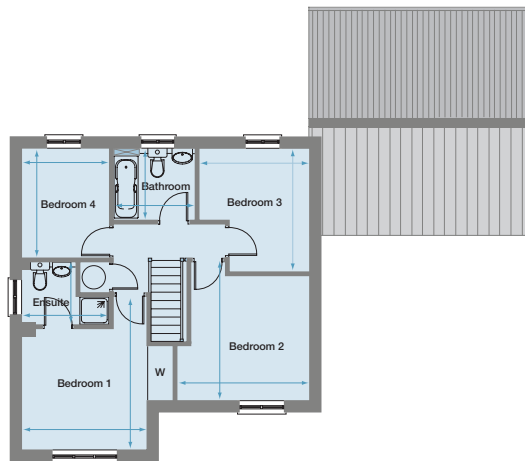
Ensuite shower room
2.37m max x 1.71m (7'9" max x 5'8")

Bedroom 2
3.75m x 3.61m max (12'4" x 11'10" max)

Bedroom 3
3.34m x 3.00m max (11'0" x 9'10" max)

Bedroom 4
2.96m x 2.37m (9'9" x 7'9")

Bathroom
2.23m x 1.92m (7'4" x 6'4")



plots 38, 40, 46 and 47 ground floor

Living Room
5.13m x 3.39m (16'10" x 11'2")

Dining Room
3.39m x 2.93m (11'2" x 9'7")

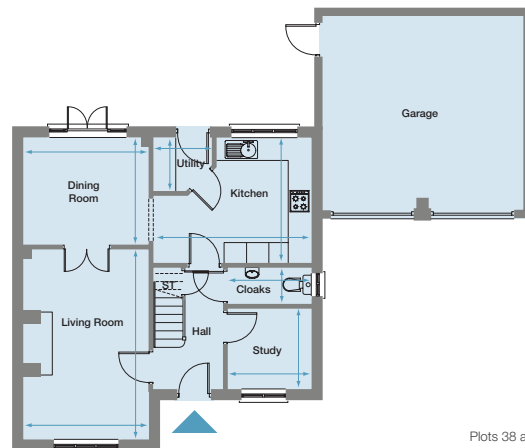
Kitchen
4.31m max x 3.42m (14'2" max x 11'3")

Utility Room
1.53m max x 1.44m (5'0" max x 4'9")

Cloakroom
2.29m x 1.01m (7'6" x 3'4")

Study
2.29m x 2.18m (7'6" x 7'2")

Double garage



Plots 38 and 40 are 'handed'