

Harburyfields

plots 35, 36 and 37



Computer generated image

These three cottage-style two bedroom homes with traditional window and porch detailing, are deceptively spacious. Plots 35 and 36 are brick built in Warwickshire Old English facing bricks. They have a good-size living room and fully-fitted kitchen along with a downstairs cloakroom. Upstairs the two generous bedrooms are served by a family bathroom.

Plot 37 is constructed from Cotswold natural stone with brick arch detailing and delightful dormer windows to the front. It is wide fronted and benefits from a spacious living room, fully-fitted kitchen/dining room, cloakroom and convenient storage space downstairs. Upstairs the master bedroom has an ensuite shower room, while the second bedroom has additional storage. There is also a separate family bathroom.

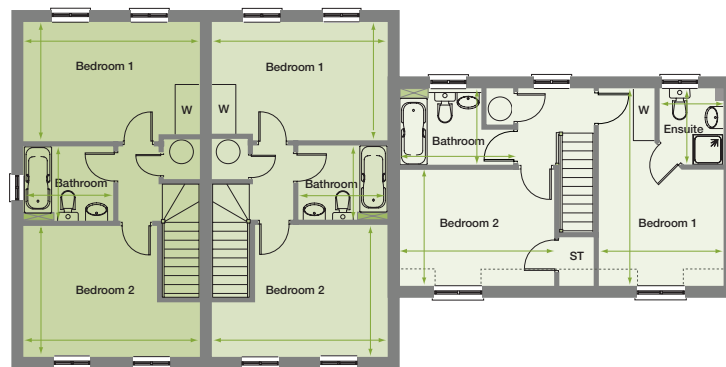
Each home has two private block-paved parking spaces.

Plots 35 and 36 first floor

Bedroom 1
4.49m x 3.07m max (14'9" x 10'0" max)

Bedroom 2
4.49m max x 3.35m (14'9" max x 11'0")

Bathroom
2.28m x 1.90m (7'6" x 6'3")



Plot 37 first floor

Bedroom 1*
4.97m max x 3.12m (16'4" max x 10'3")

Ensuite shower room
1.91m x 1.61m max (6'3" x 5'3" max)

Bedroom 2*
4.03m x 2.94m (13'3" x 9'8")
plus store cupboard

Bathroom
2.94 max x 1.91m (9'8" max x 6'3")

* part reduced eaves

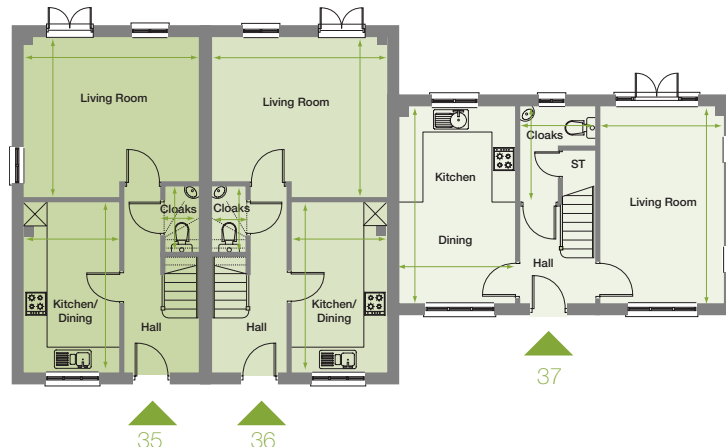
Plots 35 and 36 ground floor

Living Room
4.49m x 4.10m max (14'9" x 13'6" max)

Kitchen/Dining
4.33m x 2.44m (14'3" x 8'0")

Cloakroom
1.73m x 0.88m (5'8" x 3'0")

No garage



Plot 37 ground floor

Living Room
4.97m x 3.12m (16'4" x 10'3")

Kitchen/Dining
4.97m x 2.94m (16'4" x 9'8")

Cloakroom
2.36m x 1.96m max (7'9" x 6'5" max)
including store cupboard

No garage