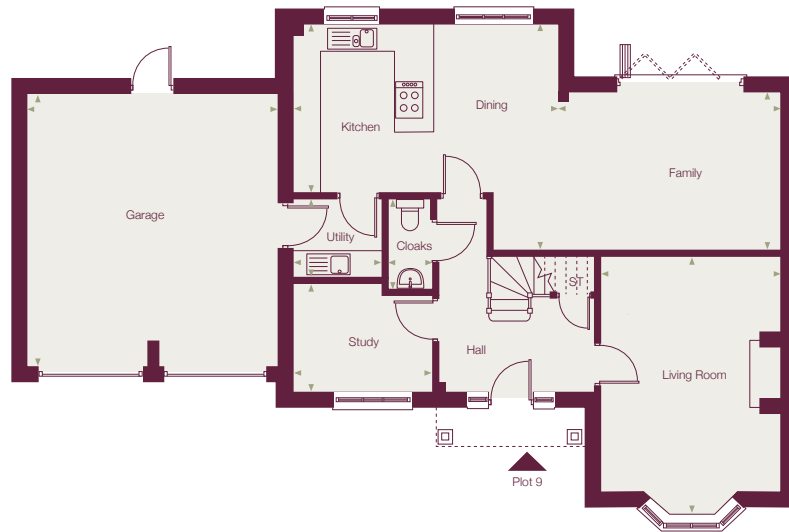






# Plot 9 floorplans



## GROUND FLOOR

Kitchen/Dining	5.84m x 4.94m max x 3.67m min	(19'1" x 16'2" max) (x 12'0" min)
Family Area	4.85m x 3.44m	(15'11" x 11'3")
Living Room	5.69m x 3.92m max	(18'8" x 12'10" max)
Study	3.03m x 2.37m max	(9'11" x 7'9" max)
Utility	1.94m x 1.75m	(6'4" x 5'9")
Cloakroom	1.96m x 0.97m	(6'5" x 3'2")
Double Garage	6.00m x 5.50m	(19'8" x 18'1")

## FIRST FLOOR

Bedroom 1*	5.94m x 5.44m	(19'6" x 17'10")
Dressing area (incl lobby)	2.43m x 2.87m	(8'0" x 9'5")
Ensuite	2.43m x 1.97m	(8'0" x 6'6")
Bedroom 2	4.56m x 3.92m max	(15'0" x 12'10" max)
Ensuite	2.28m x 1.56m	(7'6" x 5'1")
Bedroom 3	4.23m x 2.97m	(13'11" x 9'9")
Bedroom 4	3.87m x 3.26m	(12'8" x 10'8")
Bedroom 5	4.07m x 2.72m max	(13'4" x 8'11" max)
Bathroom	2.37m x 1.91m	(7'9" x 6'3")

\*part reduced eaves