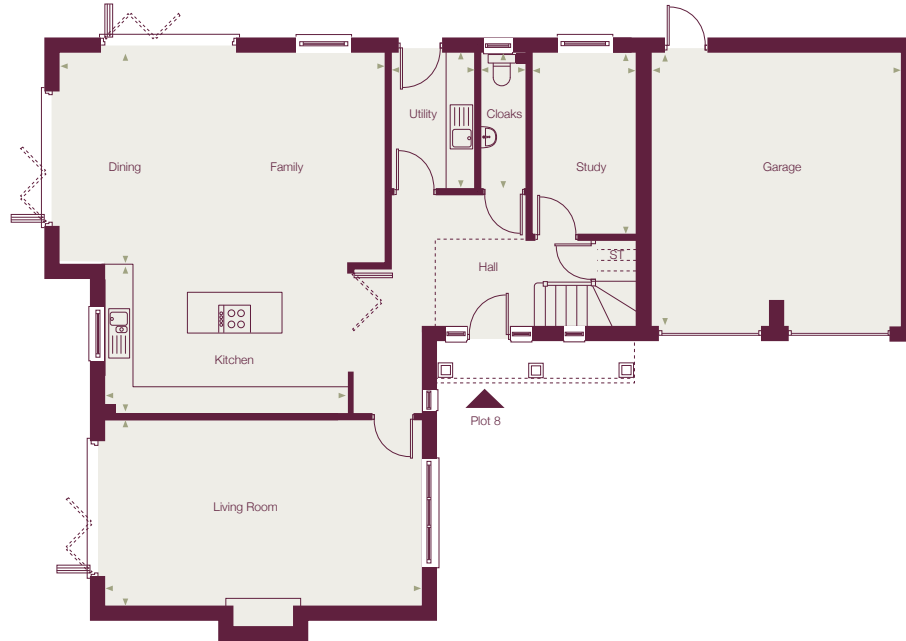




Plot 8 floorplans



Layout is subject to planning

GROUND FLOOR

Kitchen	5.28m x 3.30m	(17'4" x 10'10")
Family/Dining	7.12m x 4.60m	(23'4" x 15'1")
Living Room	6.88m x 4.04m	(22'7" x 13'3")
Study	3.94m x 2.24m	(12'11" x 7'4")
Utility	2.94m x 1.76m	(9'8" x 5'9")
Cloakroom	2.94m x 1.07m	(9'8" x 3'6")
Double Garage	6.00m x 5.50m	(19'8" x 18'1")

FIRST FLOOR

Bedroom 1	4.96m x 4.57m	(16' 3" x 15' 0" max)
Dressing Area	4.93m x 1.97m	(16'2" x 6'6")
Ensuite	2.97m x 2.88m	(9'9" x 9'5")
Bedroom 2 (incl. lobby)	7.39m x 3.61m max	(24'3" x 11'10" max)
Ensuite	2.24m x 1.96m	(7'4" x 6'5")
Bedroom 3	5.76m x 3.15m	(18'11" x 10'4")
Bedroom 4*	5.44m x 2.88m max	(17'10" x 9'5" max)
Bedroom 5*	4.22m x 2.95m max	(13'10" x 9'8" max)
Bathroom	2.88m x 3.17m max	(9'5" x 10'5" max)

*part reduced eaves