



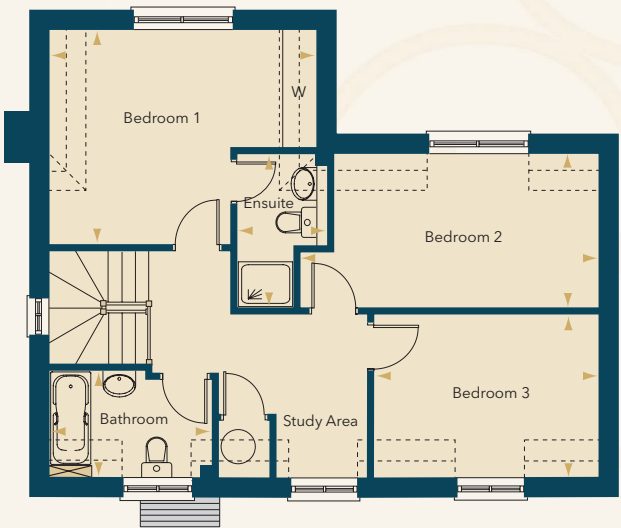
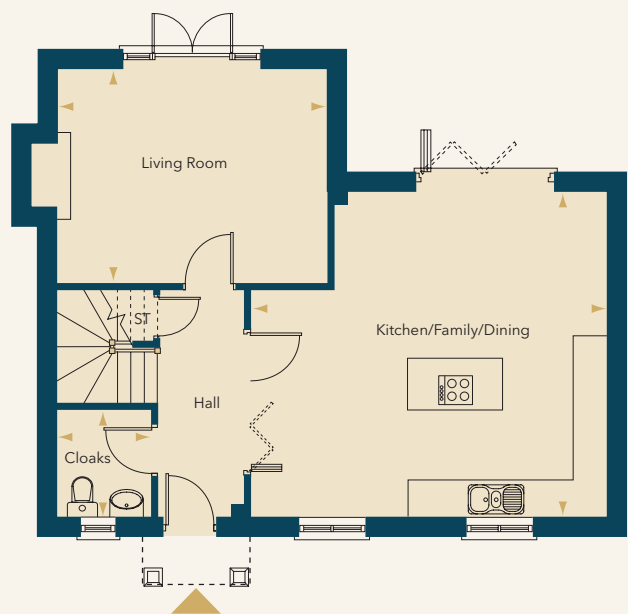
Computer Generated Image



# Plot Eight

Occupying a **TRANQUIL** position this picturesque three bedroom detached home is full of **CHARACTER** and is the epitome of open plan living. The large L shaped kitchen/dining/family area has two sets of bi-fold doors, one opening up the space into the hall and the other leading into the lovely rear garden, whilst the **CHARMING** staircase with oak detailing leads to a spacious landing incorporating a secluded study area.

## Plot eight floor plans



### GROUND FLOOR

Kitchen/Dining/Family	6.16m x 5.59m max	(20'3" x 18'4" max)
Living Room	4.61m x 3.68m	(15'2" x 12'1")
Cloakroom	1.84m x 1.61m	(6'0" x 5'3")
Single Garage		

### FIRST FLOOR\*

Bedroom 1	4.61m x 3.71m max	(15'2" x 12'2" max)
Ensuite	2.67m x 1.59m max	(8'9" x 5'3" max)
Bedroom 2	5.15m x 2.66m max	(16'11" x 8'9" max)
Bedroom 3	3.87m x 2.82m	(12'8" x 9'3")
Bathroom	2.82m x 1.84m max	(9'3" x 6'0" max)

\* part reduced eaves