



Computer Generated Image



Plot Four

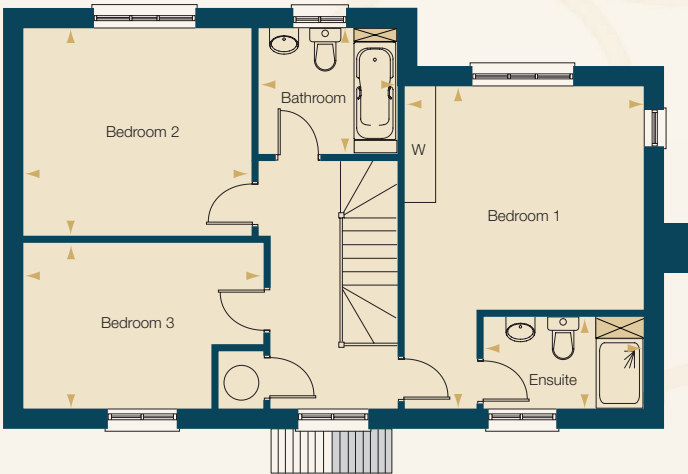
A **SPACIOUS** three bedroom detached, wide-fronted property offering dual aspect and contemporary living spaces, with both the open plan kitchen/family room and the separate living room opening out onto the south west facing, partly walled rear garden. Complemented by the warm hues of its oak clad garage, and the charming estate railings and hedging that form the front boundary, this **DELIGHTFUL** residence offers **STYLISH** accommodation with traditional detailing.

Plot four floor plans



GROUND FLOOR

Kitchen/Family/Dining	6.54m x 4.14m	(21'5" x 13'7")
Living room	5.54m x 4.14m	(18'2"x13'7")
Utility	2.14m x 2.08m	(7'0"x 6'10")
Cloakroom	2.14m x 0.97m	(7'0" x 3'2")
Single garage		



FIRST FLOOR

Bedroom 1	5.54m x 4.17m max	(18'2" x 13'8" max)
Ensuite	2.76m x 1.56m max	(9'0" x 5'1" max)
Bedroom 2	3.97m x 3.57m	(13'0" x 11'9")
Bedroom 3	4.17m x 2.86m max	(13'8" x 9'5" max)
Bathroom	2.36m x 2.16m	(7'9" x 7'1")